

Nicola Godden

GARDEN AND MONUMENTAL SCULPTURE





Icarus I
Bronze
330cm
Edition of 6



Icarus Fell
(Amid Feathers)

Bronze
340cm
Edition of 5



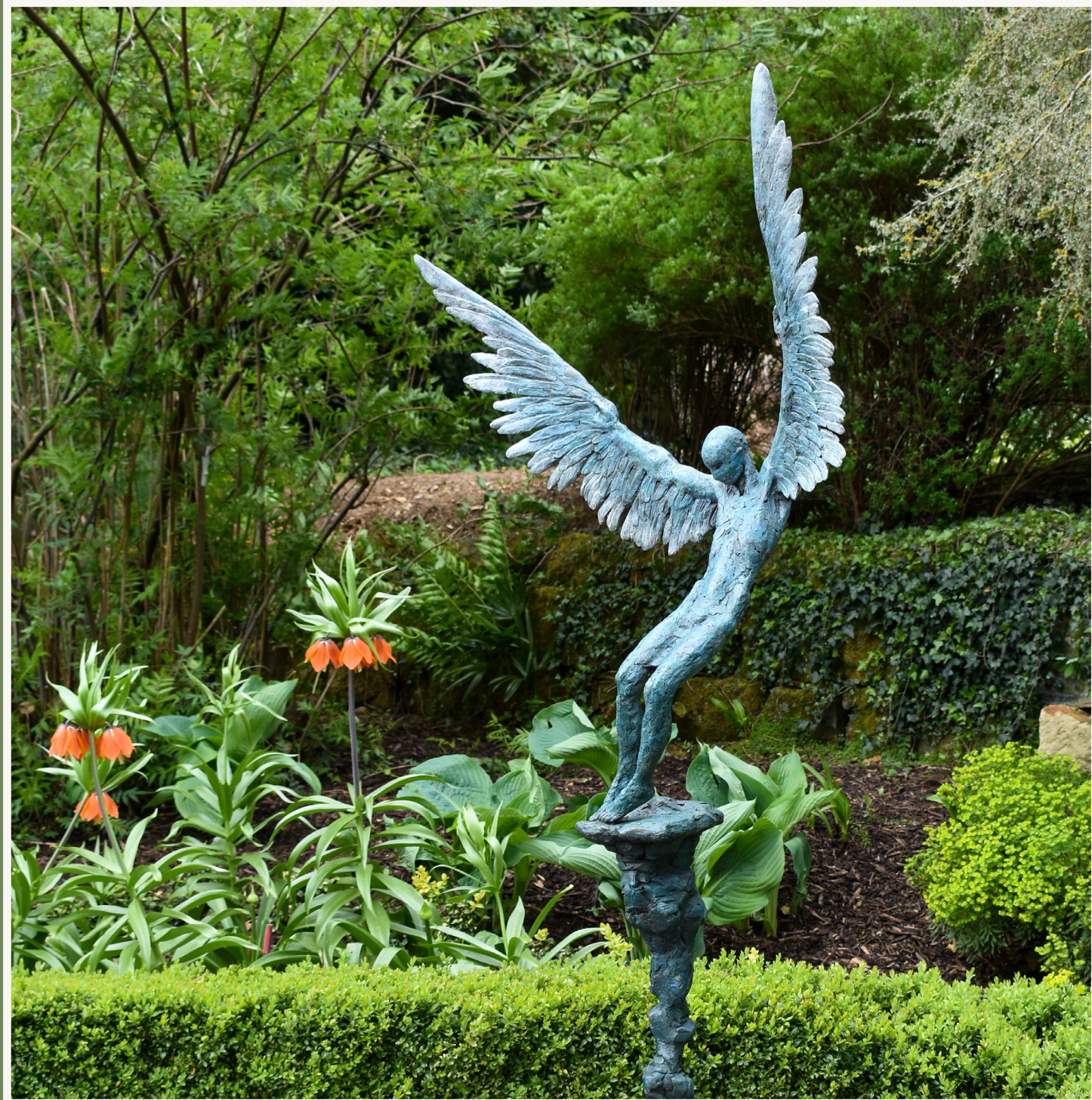


Icarus IX
Bronze
206cm
Edition of 9





Icarus X
Bronze
206cm
Edition of 9





Icarus II
Bronze
170cm
Edition of 12





Icarus Rising II

Bronze

260cm

Edition of 6





Theia
(Goddess of Light)

Bronze
420cm
Edition of 5

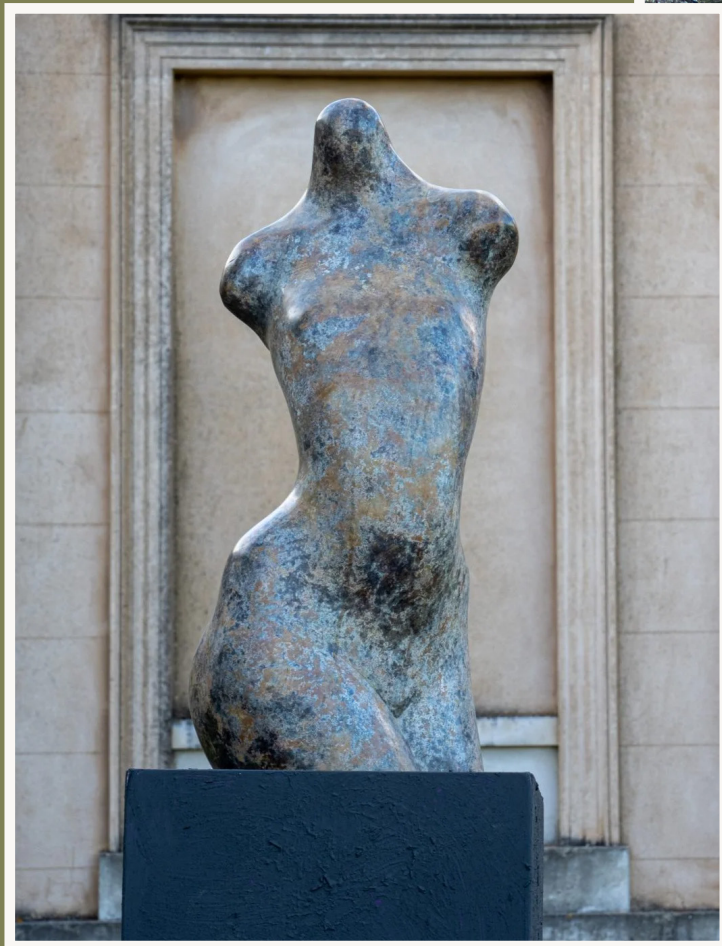




Metamorphosis
(Eve III - Eve IV - Eve V)



Eve III
Bronze
72cm
Edition of 9



Eve IV
Bronze
72cm
Edition of 9



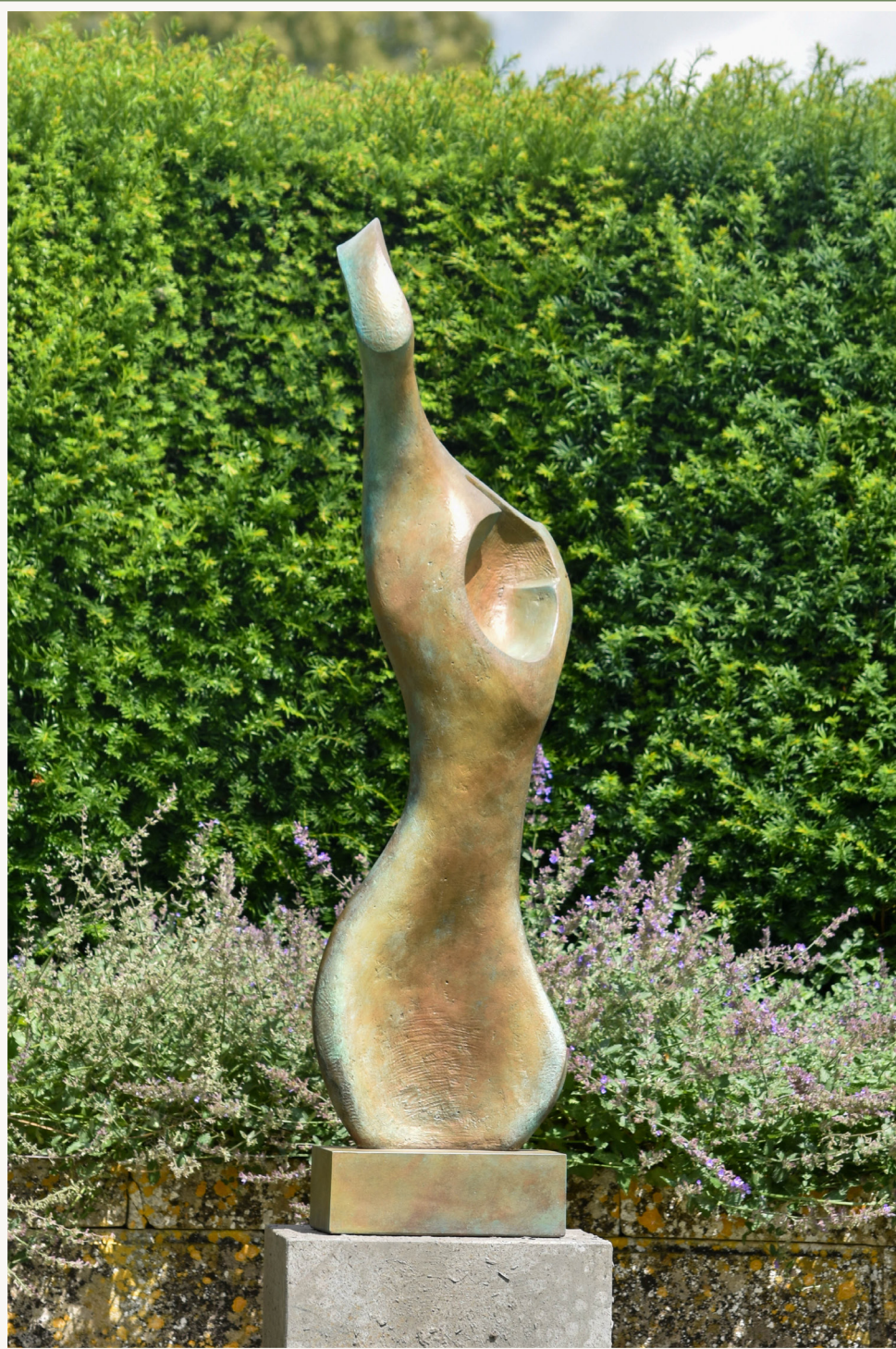
Eve V
Bronze
68cm
Edition of 9



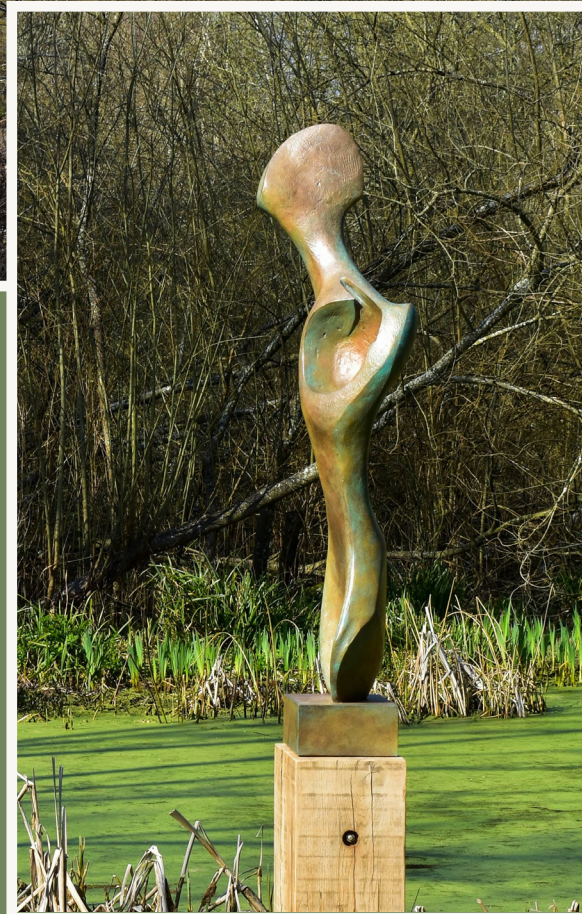
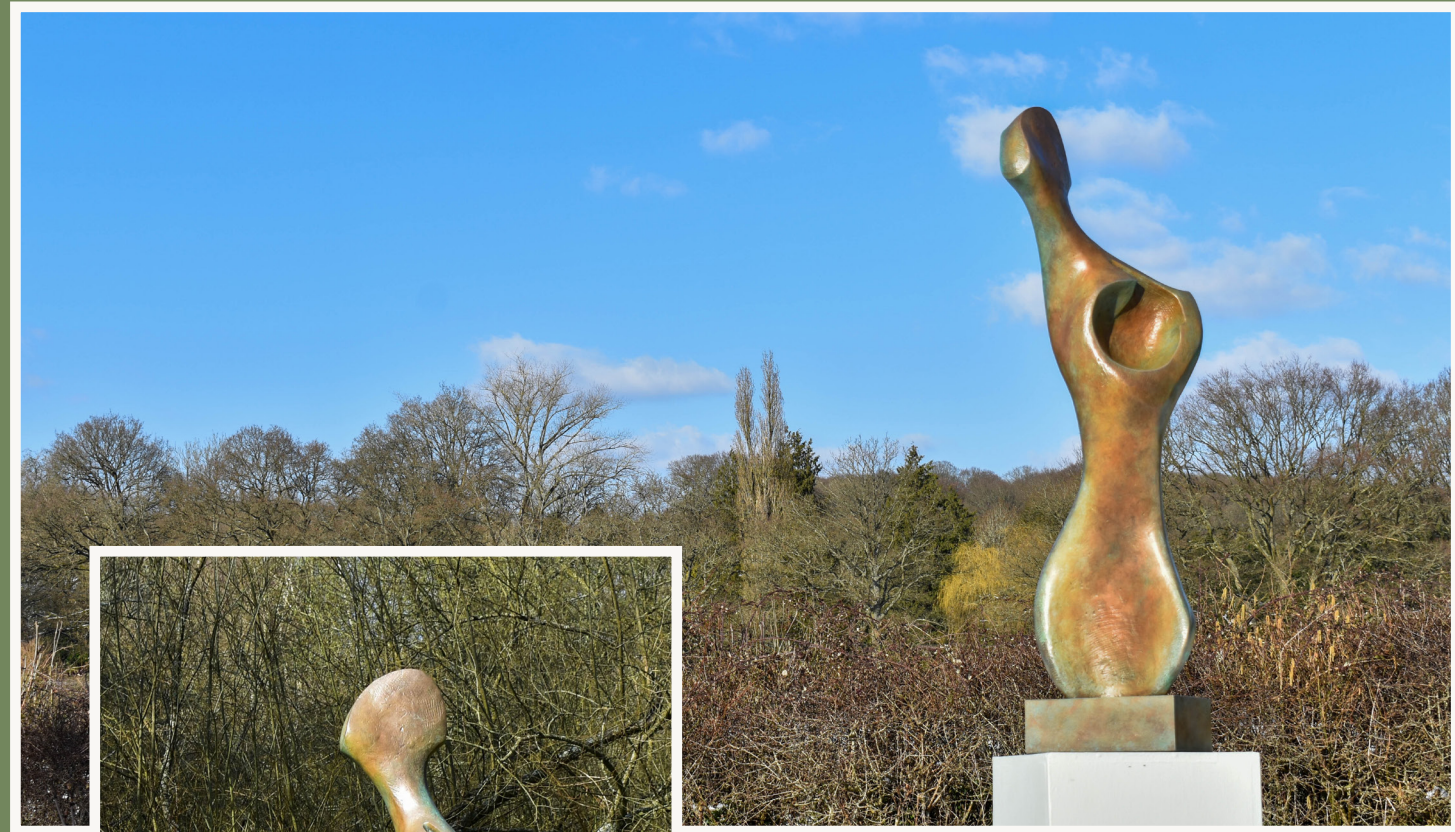
Bone Form II

Bronze
127cm
Edition of 6





Bone Form IV
Bronze
127cm
Edition of 6



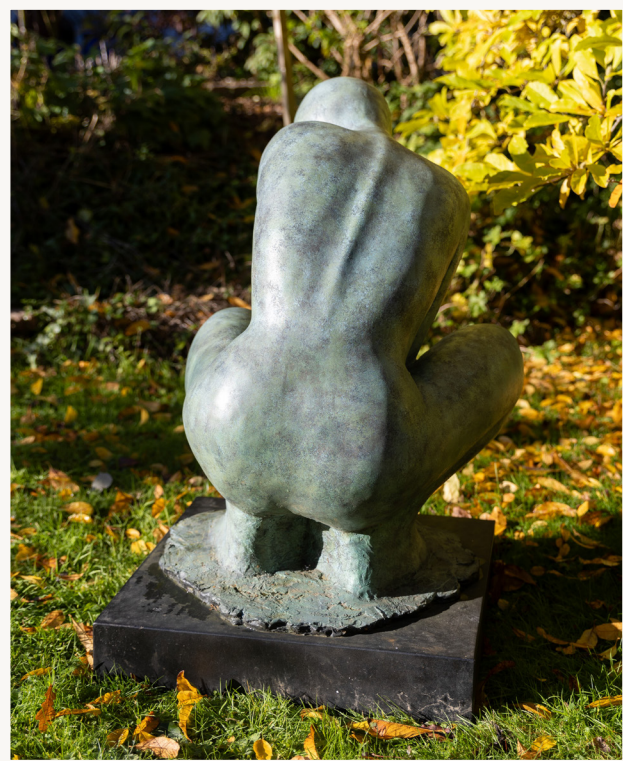


Bone Form VI

Bronze

99cm

Edition of 9



Gaia – Earth Mother

Bronze

76cm

Edition of 9





Mask of Achilles

Bronze

Height: 204cm

Width: 61cm

ARTIST STATEMENT

My work is nearly always based on the human figure, whether in an abstract form or in a more realistic way.

As a sculptor, I have always wanted to work from the human form because of the fascination I have with it and the feelings and emotions it conveys. What is important to me is not that the person viewing one of my sculptures experiences the same feelings and emotions that I do, but rather that when looking at the piece, they experience their own feelings and emotional response to it.

Ideas for a new sculpture can come from anywhere or anything. In the past, I have been inspired by pieces of flint and bone, which I found whilst out walking. I have quite a collection in the studio. My 'Bone Form' series of figures began when I picked up part of a bone that I thought was beautiful and looked rather like a female torso. I like to see a human form in a stone or bone I find.

The essence of the subject is what connects with the viewer and delights or moves them. It is immensely satisfying to know that other people are reacting in a way that uplifts them or moves them in a deep way. Something beautiful can create such intense pleasure in those that see it. I want to create artwork that has an emotional effect on the viewer and is also something they want to touch. This is part of the beauty of a three-dimensional form.

I do not want my work to be completely understood from just one view. The idea with each sculpture is that the viewer is drawn around it. I try to create movement in each piece, with twists and turns or balance and angles. As the viewer walks around the sculpture each view is different and there can be surprises and unexpected interest. I enjoy the changes to my work and the different objects that stimulate my imagination and urge me to create something new. This is why I often produce something completely new and different from my previous sculptures.

I get a thrill from beginning a new piece of sculpture and not knowing where I am going with it. The end result may not be to my liking but it does not matter as I enjoy the process so much. I love the experience of working with either clay or plaster. Although they are quite different materials to work with both are fun and can be quite sensual to use. I really enjoy the physicality involved in creating a large piece and can spend hours and hours at a time without getting tired or losing my excitement.





Nicola Godden

NICOLAGODDEN.COM

